

Reference

Research station in Antarctica Neumayer III – On stilts in the permanent ice

Purchaser

Alfred-Wegener-Institut für Polar- und Meeresforschung

Venue

Germany and Antarctica

J.H.K. service

New construction of the German Antarctic research station

Project period

05/2007 – 04/2009

Neumayer III was built in a work group with a partner for isolation technology. The 3,300 m² large construction is the new centre of the German Antarctic research. By lifting devices the growing snow and ice surface of abt 90 cm p.a. can be compensated. The total load of 2,300 t is distributed on 16 hydraulic bipods. These ensure that the station can be lifted to the required level. A logistic masterpiece was the material transportation via the ice shelf. The environmental protection requirements of the Antarctic contract had utmost priority for the performance of the work group – from planning via commissioning to the waste disposal.

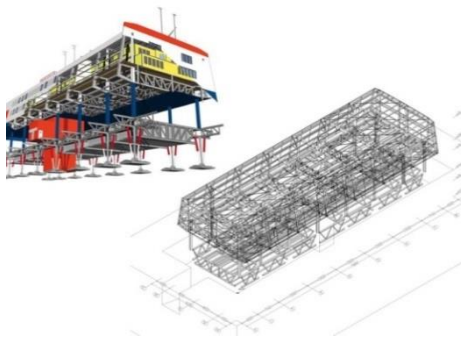
Oil and gas

Energy industry

Process industry

Ship building

Offshore



Order

- New construction of the German Antarctic research station
- Detail engineering and design planning
- Planning of assembly

Service provision

- General contractor for the new construction
- Workshop drawings
- Prefabrication especially of steelwork in Germany
- Logistics from one source to Antarctica
- Assembly on site in Antarctica

Benefits for our customers

- + Project from one source
- + Completion in planned period
- + Best know-how in complexity management
- + High quality level
- + Committed team

Operating company:

J.H.K. Engineering GmbH & Co. KG
Labradorstr. 5
27572 Bremerhaven
Germany

Interest in more examples of our performance? Visit us online at www.jhk.de